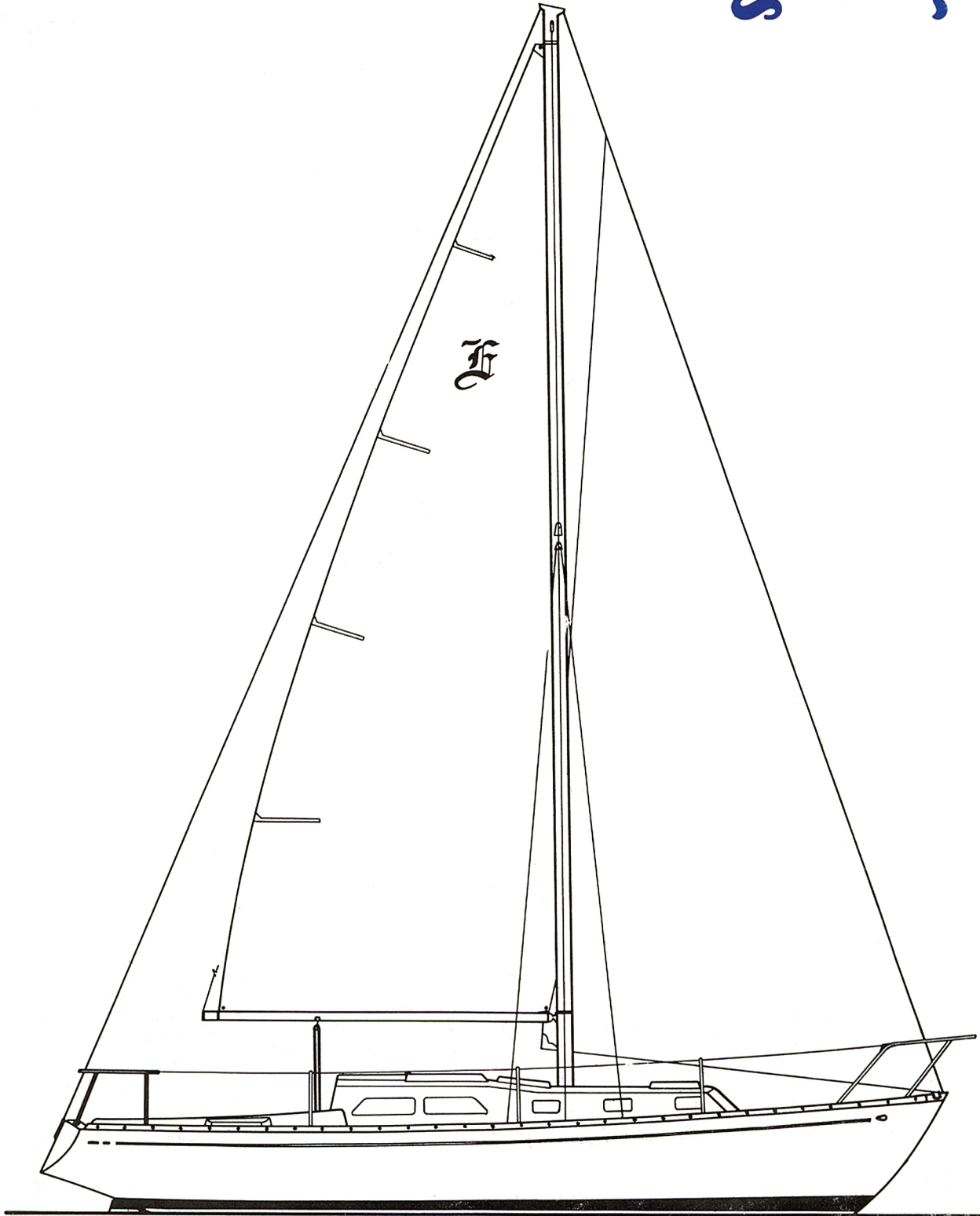


# Endeavour Yacht



Corporation

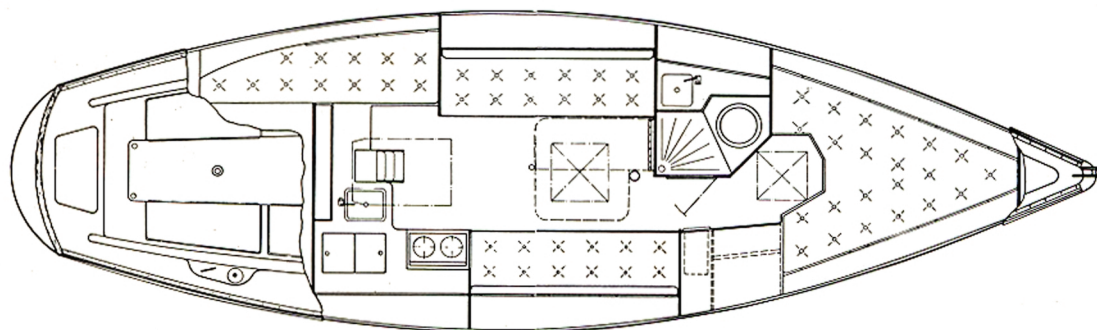
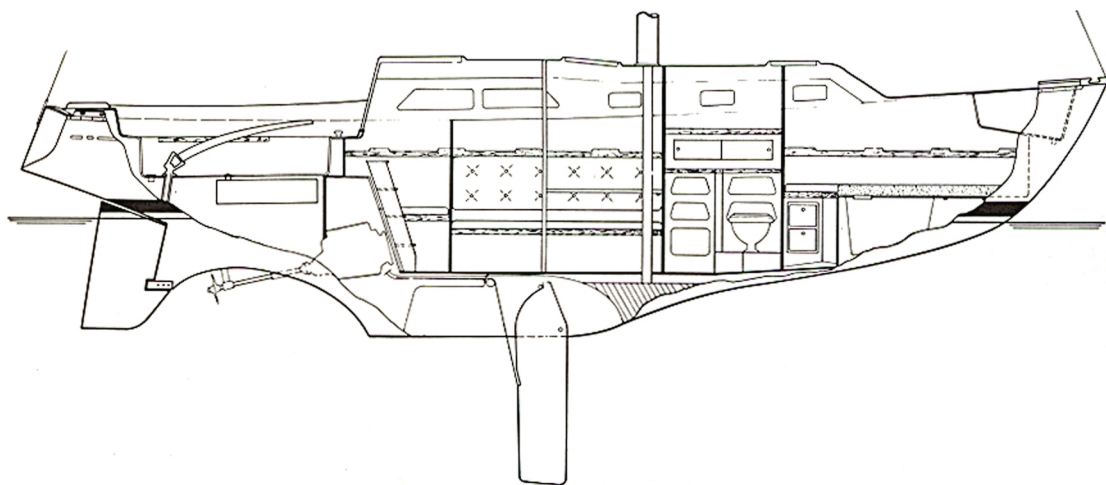


## SPECIFICATIONS:

L.O.A. . . . . .	32'0"
L.W.L. . . . . .	25'3"
BEAM . . . . .	9'9"
DRAFT (board up) . . . . .	3'6"
(board down) . . . . .	7'10"
DISPLACEMENT . . . . .	11,700 lb.
BALLAST (internal lead) . . . . .	5,300 lb.
SAIL AREA . . . . .	470 sq. ft.
MAST HEIGHT (above D.W.L.) . . . . .	43'0"
AUXILIARY . . . . .	diesel
HEADROOM . . . . .	6'4"



GALLEY

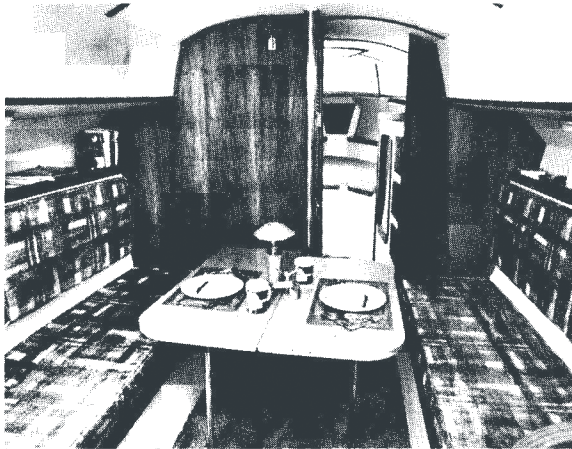


FORWARD CABIN



## STANDARD EQUIPMENT

Bow Pulpit, Stern Rail, Lifeline  
Two No. 22 Stainless Steel Genoa Sheet Winches  
Two No. 8 Stainless Steel Halyard Winches  
Genoa Gear  
Manual Bilge Pump  
Anodized Spars  
4" Berth Mattresses  
Enclosed Head: Marine Toilet, Wash Basin,  
Vanity and Mirror,  
Shower Pan  
Six Opening Ports  
Cove Stripe  
Boot Top  
65 Gallon Water Tank  
20 Gallon Fuel Tank  
2 Burner Alcohol Stove with Oven  
Extruded Aluminum Toe Rail  
Teak Winch Island Caps  
Two 70 Amp. Batteries  
Navigation Lights  
Main Sheet Travler  
Bottom Paint  
10 Cubic Foot Ice Chest  
Decor: Carpeting and Decorator  
Fabric Mattress Coverings  
Interior & Exterior Teak Trim  
Pullout Double Berth, Main Cabin



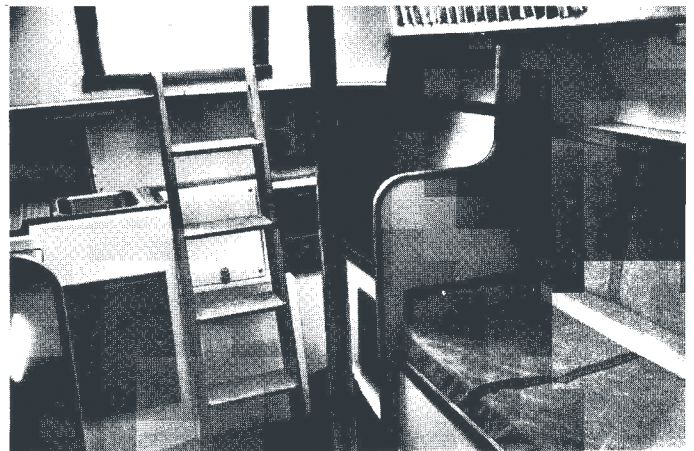
MAIN CABIN FORWARD

## OPTIONAL EQUIPMENT

Masthead Light  
Spreader Lights  
Pedestal Steerer with Lighted  
Compass  
Double Lifeline  
Pressure Water System  
Dockside Power  
Electric Bilge Pump  
V-Berth Filler  
Contrasting Non-Skid Color, Cabin Top  
Shower Package: Pressure  
Water, Electric Bilge Pump  
and Shower.

## SAILS

Mainsail  
Lapper  
150% Genoa  
170% Genoa  
Spinnaker  
Spinnaker Staysail  
Double Head Rig Staysail  
Storm Trisail  
Storm Jib  
Mainsail Cover



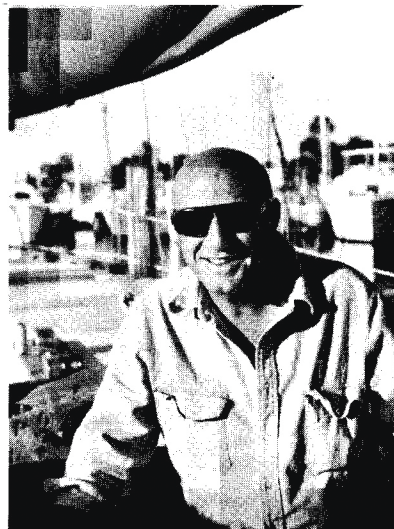
MAIN CABIN AFT

# It took two sailors

with 25 years experience in boat building about one year to come up with a cruising sailboat that would satisfy them enough to offer it to you.

Like every great boat, she's a blend of her designer and builder's belief in what a boat should be and what she must accomplish. In the ENDEAVOUR 32, John and Rob have combined a comfortable cruising boat below with the classic clean lines and underbody of the old CCA racing machines, hence the "CRUISING MACHINE." She'll foot like a champion, run like the wind, yet slide into gunkholes and across bars you wouldn't dare go near with a fixed keel boat.

There's something about the pride that sailors put into building their own sailboat that makes the ENDEAVOUR a great boat. You can build mass production boats and cut corners on quality without feeling any emotion. But you can't do that with your OWN boat. So John and Rob watch every step of the mold polishing, lay-up and assembly of their boats, just like you would if it were yours. The result is obvious quality and care in manufacturing that they're proud of, and you will be too.



*"Hey, no kidding, she sails great" . . .  
—John C. Brooks*

It's funny how all the big names in mass production sailboats started out the same way with one or two great models, built with pride and care. Then the inevitable occurs as models are added and volume increased. After ten-plus years of building those boats, John and Rob have decided there has to be a better way. By staying small, offering just a couple of good boats and holding the volume in hand, they hope to keep the quality and pride where it is today. ENDEAVOUR YACHT will never be one of the "big boys" in sailboats, but they will be one of the best. Stop by the plant and see how you'd build a boat if you were in the business.



*"I've been building fiberglass boats for 15 years. Believe me, she's right."  
—Robert A. Valdes*

## Endeavour Yacht Corporation

11700 South Belcher Road  
Largo, Florida 33540  
813/541-3553