

FMT-50W-BLANCHARD

P/N:

Wt: 71.5 Lbs

FINISH:
NONE

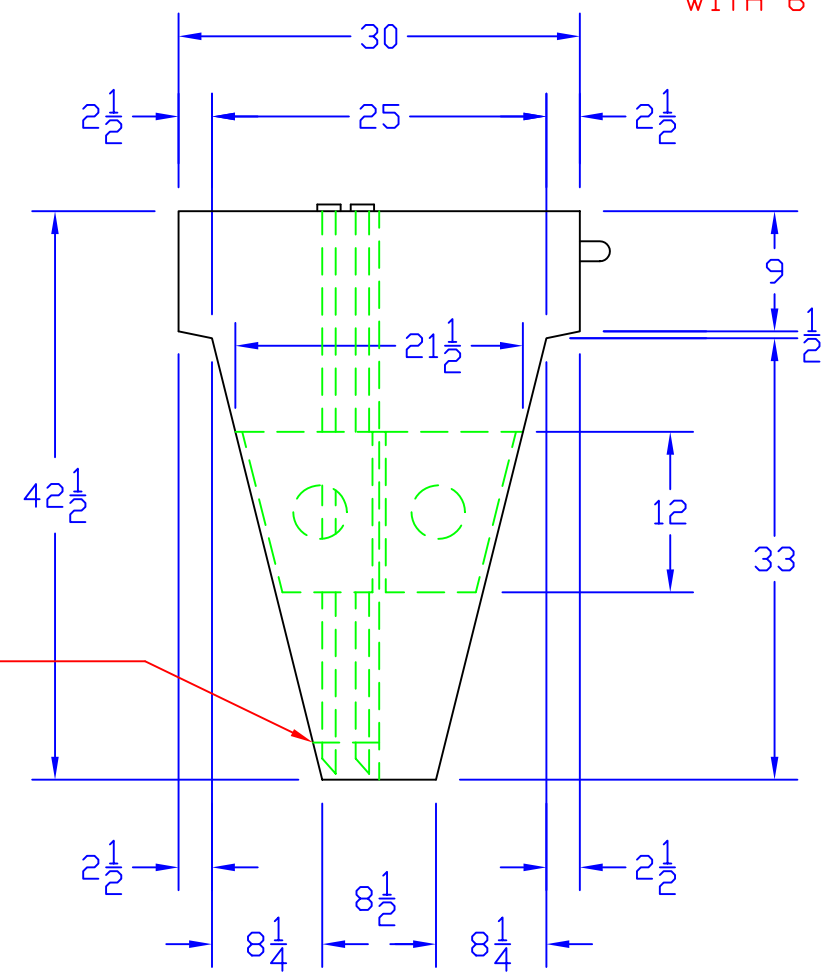
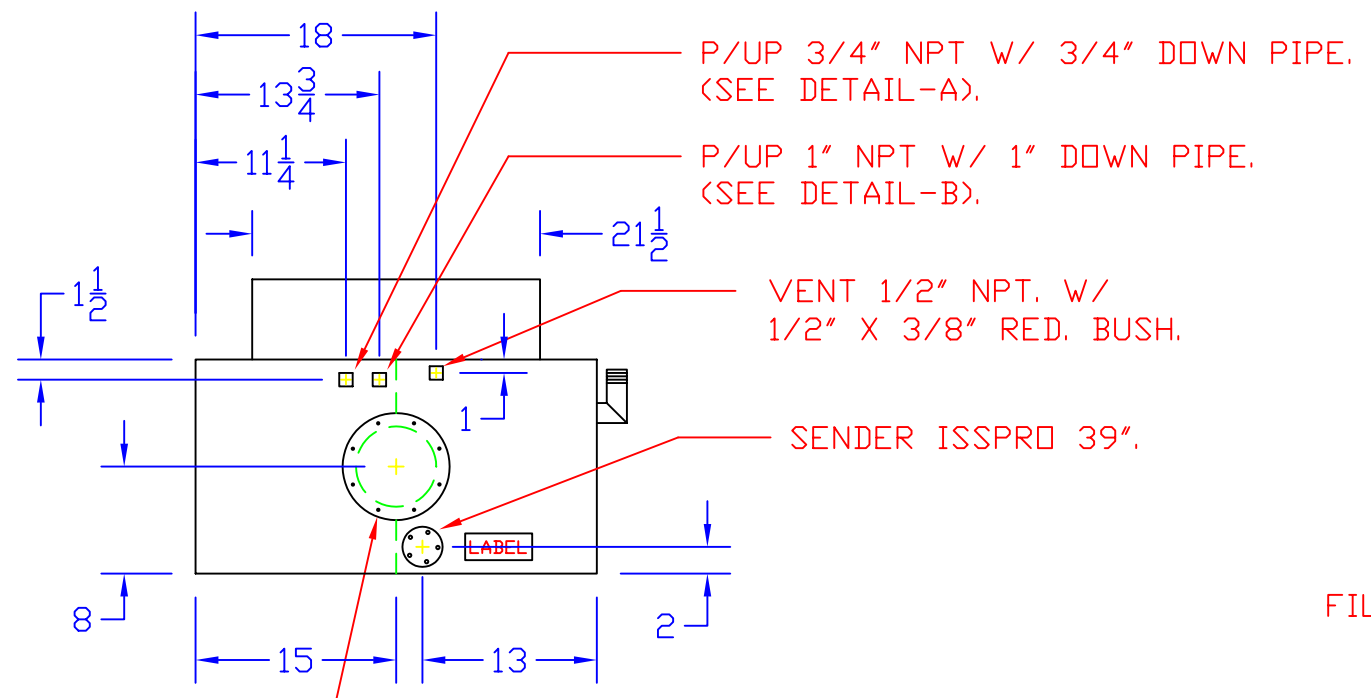
CUTTING SPECIFICATIONS:

TOP/SIDES:
 68 1/4 X 28 3/4
 BOT: 28 3/4 X TEMP
 END: 8 3/4 X 54 3/4

BAFFLES:
 1 56 1/4 X 10 1/4
 2 12 X 10 1/4

REVISIONS:

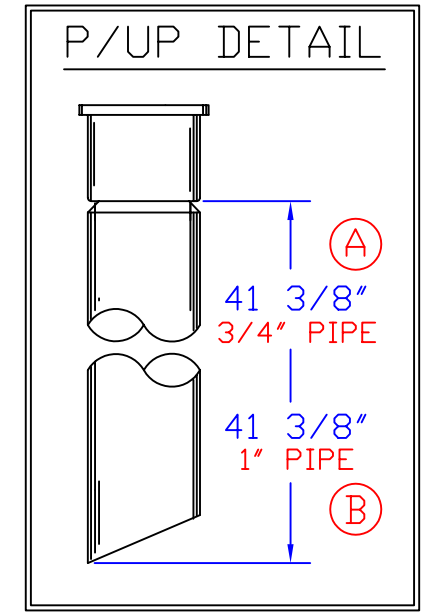
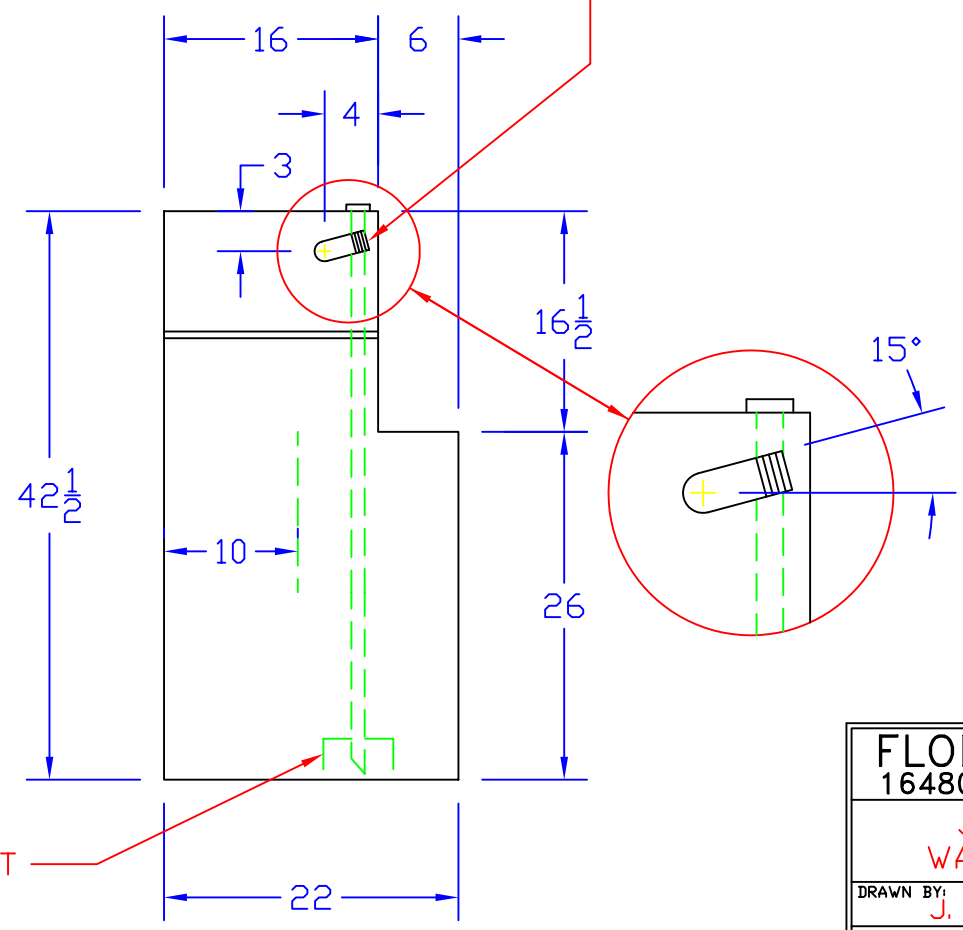
FLORIDA MARINE TANKS, INC. 16480 N.W. 48 AVE. HIALEAH, FL. 33014		
JOE L. BLANCHARD 50 GALLON WATER TANK FOR 40' ENDEAVOUR.		
DRAWN BY: J. BLANCO	SCALE: 1" = 1'	MATERIAL: .125" AL.
NET GAL: 50.9	DATE: 12-06-06	DRAWING NO: BLANCHARD -50.9W1206
CERT. DATE:	APP'D:	



TUBE SUPPORT (TYP-2)

INSPECTION PLATE 8" DIAMETER WITH 6" HOLE ON TANK.

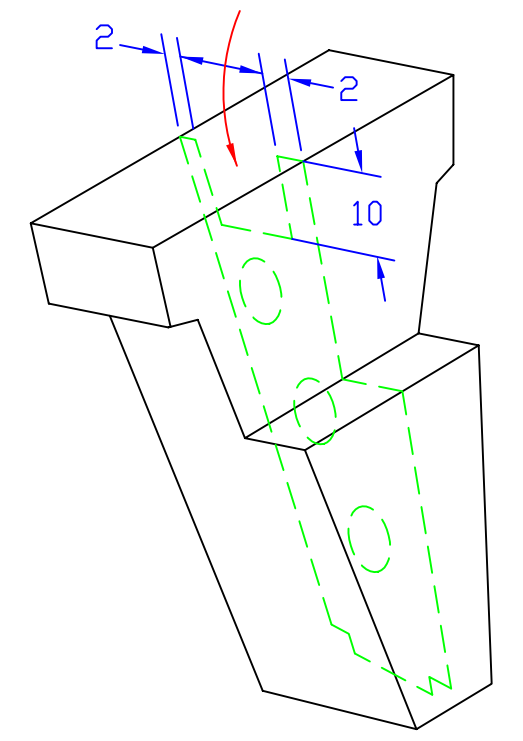
FILL 1 1/2" O.D. X 90°.



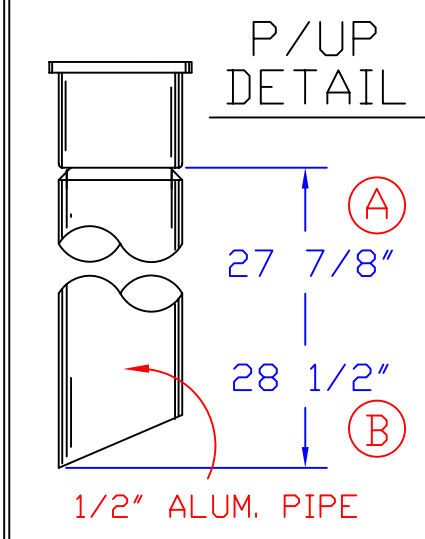
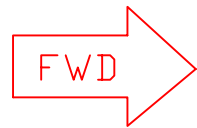
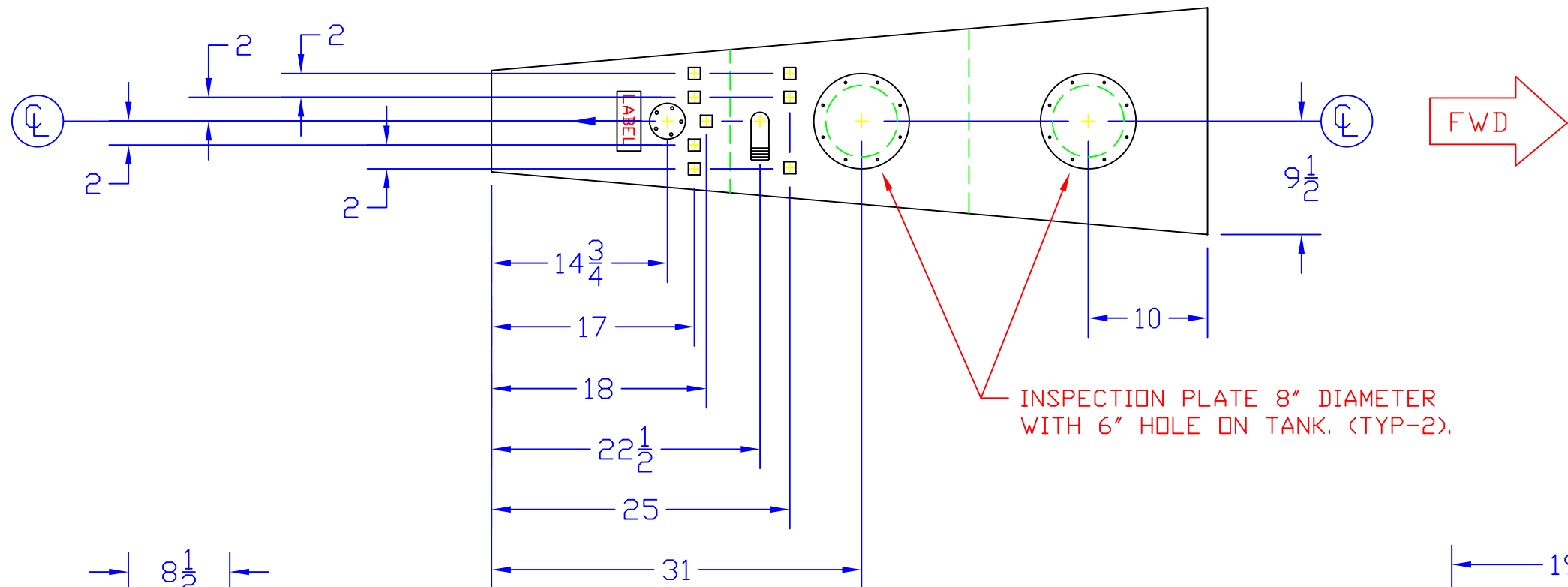
FMT-60W-BLANCHARD	
P/N:	
Wt:	78.5 Lbs
FINISH:	NONE

CUTTING SPECIFICATIONS:	
TOP/SIDES:	47 1/4 X 15 3/4
BDY:	81 1/8 X 21 3/4
END:	29 3/4 X 42 1/4
END:	22 X 21 1/4
BAF:	23 1/4 X 43 3/4

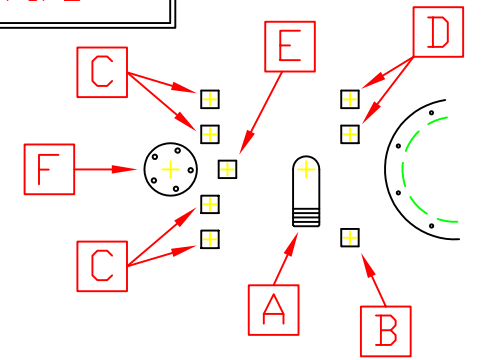
BAFFLE CUT OUT FOR INSP. PLATE.



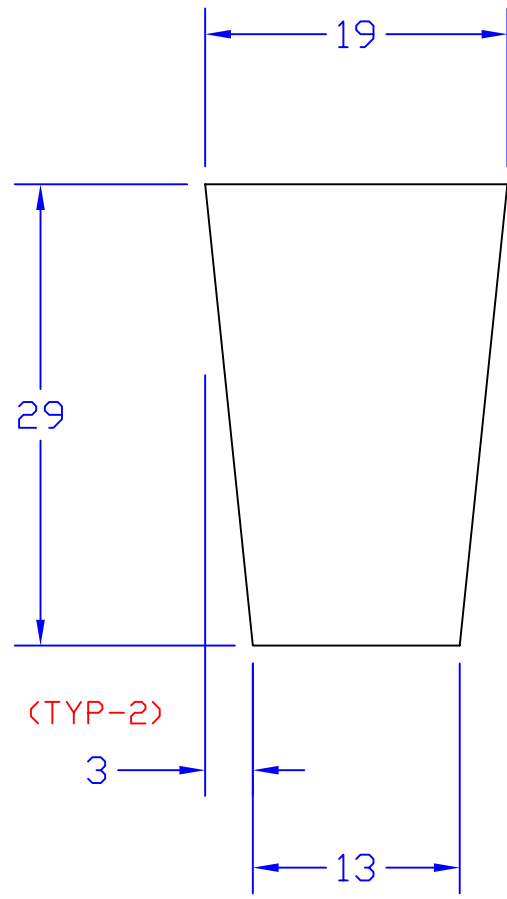
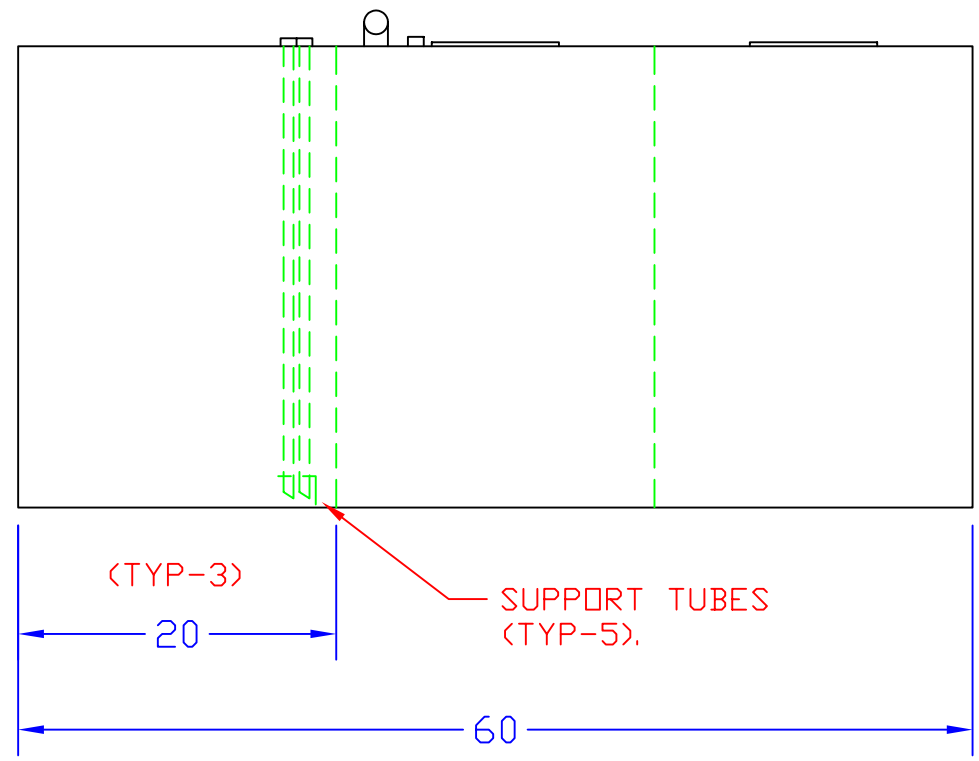
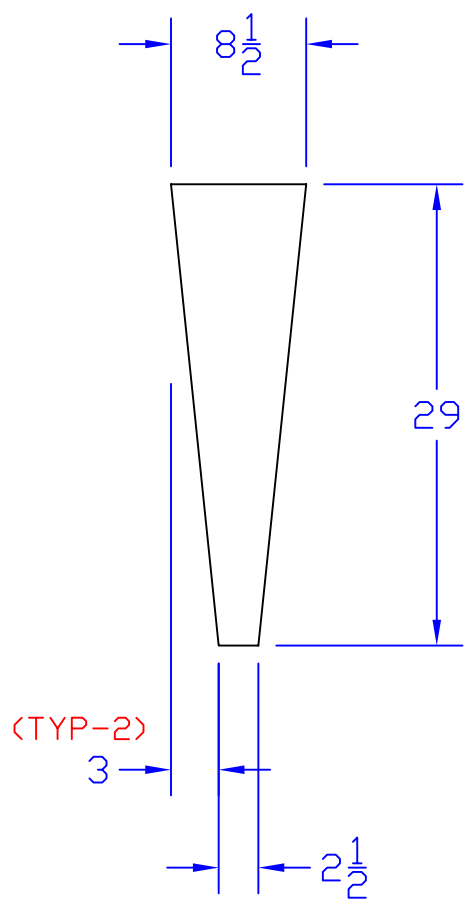
FLORIDA MARINE TANKS, INC. 16480 N.W. 48 AVE. HIALEAH, FL. 33014		
JOE L. BLANCHARD 60 GALLON WATER TANK FOR 40' ENDEAVOUR.		
DRAWN BY:	SCALE:	MATERIAL:
J. BLANCO	1" = 1'	.125" AL.
NET GAL:	DATE:	DRAWING NO.:
60.5	12-06-06	BLANCHARD -60.5W1206
CERT. DATE:	APP'D:	



FMT-77-BLANCHARD	
P/N:	
Wt:	78.5 Lbs
FINISH:	NONE
CUTTING SPECIFICATIONS:	
BDY:	
TOP:	
END:	
BAF:	



- A** FILL 1 1/2" O.D. X 90°.
- B** VENT 1/2" NPT W/ 1/2" X 3/8" S.S. REDUCER BUSHING
- C** P/UP 1/2" NPT W/ 1/2" X 3/8" S.S. REDUCER BUSHING W/ SUPPORT TUBE (SEE P/UP DETAIL-A).
- D** RETURN 1/2" NPT W/ 1/2" X 3/8" S.S. REDUCER BUSHING
- E** P/UP 1/2" NPT W/ 1/2" X 3/8" S.S. REDUCER BUSHING W/ SUPPORT TUBE (SEE P/UP DETAIL-B).
- F** SENDER ISSPRO 28".



FLORIDA MARINE TANKS, INC. 16480 N.W. 48 AVE. HIALEAH, FL. 33014		
JOE L. BLANCHARD 77 GALLON FUEL DIESEL TANK FOR 40' ENDEAVOUR.		
DRAWN BY: J. BLANCO	SCALE: 1" = 1'	MATERIAL: .125" AL.
NET GAL: 77.8	DATE: 12-06-06	DRAWING NO: BLANCHARD -77.80301
CERT. DATE:	APP'D:	