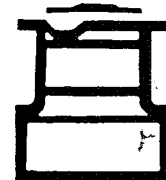


MODEL 18 2-SPEED WINCH

MANUFACTURED AFTER MARCH 1, 1983

The International Standard

BARIENT



IMI BARIENT INC.

1600 E. St. Gertrude Pl.,
Santa Ana, CA 92705
Tel.: (714) 557 8104
Telex: 182706

New Whitfield St.,
Guildford, CT 06437
Tel.: (203) 453 4374
Telex: 643925

3703 131st Ave. N.,
Clearwater, FL 33520
Tel.: (813) 577 9500
Telex: 523497

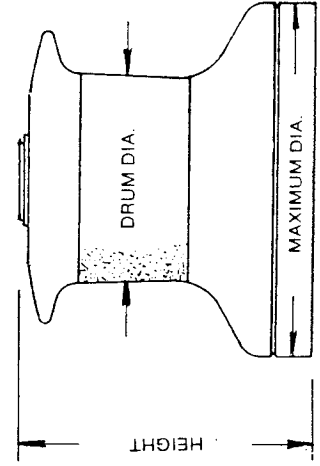
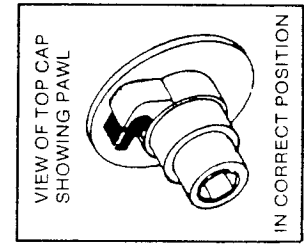
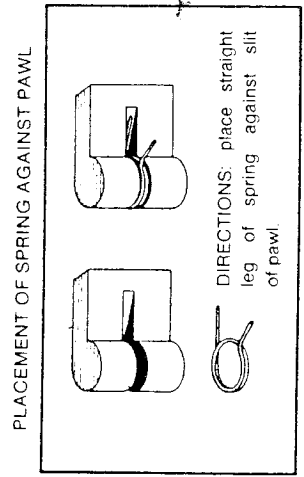
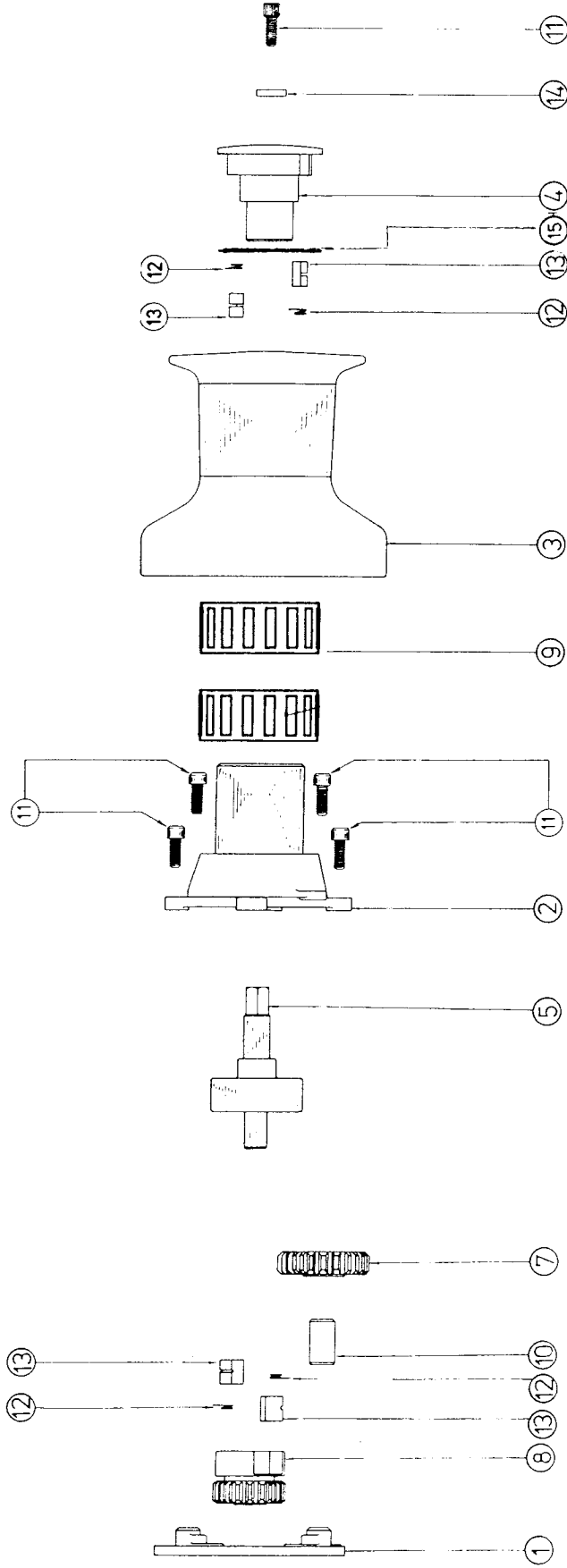
Port Les Minimes
17000 La Rochelle, FRANCE
Tel.: (46) 44 5120
Telex: 791240

Waterloo Road,
Lymington, Hants, U.K. S04 9DB
Tel.: (590) 7 7714
Telex: 47185

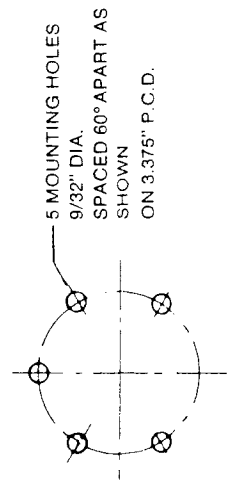
• NEW ZEALAND
Masport Ltd.
PO Box 14349,
Panmure, Auckland 6,
New Zealand
Tel.: 579 009
Telex: 21898

• AUSTRALIA
Barient Australia
Pty. Ltd.
52 Wentworth St.,
Granville, NSW 2142
Tel.: (02) 637 9333
Telex: 24301

MODEL 18 2-SPEED WINCH



	1st	2nd
GEAR RATIO	1:1	3.6:1
POWER RATIO	6.7:1	24:1
DRUM DIA.	76mm	3"
MAXIMUM DIA.	133mm	5 1/4"
HEIGHT	111mm	4 3/8"



MOUNTING INSTRUCTIONS

- Using dismantling handle and $\frac{3}{16}$ " Allen key remove the cap screw (11) and the retaining washer (14) in the top cap (4).
- Lift the drum (3) and top cap (4) together from the gearbox assy. (2).
CAUTION: The drum bearing (9) sometimes sticks to the drum and may be dropped.
- Bolt the base (1) to a flat and smooth surface drilled to take five hexagon head screws $\frac{1}{4}$ " (6 mm) dia. on $3\frac{3}{8}$ " (86 mm) bolt circle dia. It is not necessary to remove the gearbox (2) from base (1). Use the base (1) as a template. Apply only light coat of bedding (sealing) compound to seal the base to the deck.
- Slide the drum (3) — top cap (4) assy. together over the bearing (9) and the gearbox assy. (2).
- Firmly tighten the cap screw (11) in the top cap (4).

TO LUBRICATE & DISASSEMBLE:

Note:

It is not necessary to remove the base (1) from the deck to lubricate this winch.

- Dismantle as steps 1 and 2 above.
- Remove bearing (9) from the gearbox assy. (2) and top cap (4) from drum (3).
- Remove four cap screws (11) and lift gearbox (2) from base (1).
- Remove main shaft assy. (5); pinion (8); idler gear (7) and shaft (10).
- Remove springs and ratchet pawls from top cap (4) and center pinion (8).
Clean all parts in petroleum solvent. Replace any parts showing damage or excessive wear. During the assembly procedure, all gears and bearings should be liberally greased with Barlube. The ratchet pawls should be lubricated with machine oil only — NEVER grease the pawls and springs.
- To assemble winch: reverse dismantling procedure and steps 4;5 under "mounting instructions".

TOOL REQUIRED:

$\frac{3}{16}$ " Allen key, dismantling handle (01-821).

LUBRICANT: Non detergent Machine Oil (SAE 30); Barient Barlube.

INSPECTION & LUBRICATION:

Quarterly lubrication is recommended. Inspect more frequently in a racing season. Monthly cleaning and lubrication of the aluminium drum winches is advisable.

Item	Part No.	Description	Qty
1	22-002	Base	1
2	23-003	Gearbox	1
3	18-404A	Drum — Aluminium	1
Alt.	18-404C	Drum — Chrome	1
Alt.	18-404B	Drum — Bronze	1
4	18-405C	Top Cap — Chrome	1
Alt.	18-405B	Top Cap — Bronze	1
5	23-006	Main Shaft	1
7	22-008	Idler Gear — 17T	1
8	22-012	Center Pinion — 13T	1
9	01-021	Bearing	2
10	01-124	Idler Shaft	1
11	01-205	Cap Screw $\frac{1}{4}$ " unc x $\frac{5}{8}$ "	5
12	01-300	Spring	4
13	01-400	Ratchet Pawl	4
14	01-502	Retaining Washer	1
15	01-585	Plastic Washer	1