



<http://floridasailboatbroker.com>

Whiteaker Yacht Sales - Tom Brinkley
Whiteaker Yacht Sales , 1035 Riverside Drive
Palmetto, FL 34221, USA

Toll-free: 866-569-3108
Tel: 941-776-0616
info@whiteakeryachtsales.com



A Capable Cruiser

Endeavour Center Cockpit Two Headsail Sloop– Highland Light

- Year: 1985
- Price: USD 124,500
- Location: Ft. Lauderdale, FL, USA
- Hull Material: Fiberglass
- Fuel Type: Diesel
- Condition: Used

"HIGHLAND LIGHT" is a true cruising boat modified for independent life aboard in remote areas without the need for shore side support. She has been refined for ocean sailing with a minimum of crew. She has never been in charter and has been "home" to her current owners since 2002. Great care has been taken in maintaining her and many improvements have been made. **"HIGHLAND LIGHT"** is in excellent condition. She must be seen to be appreciated.

Additional Specs, Equipment and Information:

Builder/Designer

Builder: Endeavour
Designer: John Valentijn

Dimensions

Cruising Speed: 6 kn	Cruising Speed RPM: 2200	LOA: 42 ft 3 in
LWL: 33 ft 4 in	Beam: 13 ft	Max Bridge Clearance: 62 ft
Max Draft: 5 ft 3 in	Cabin Headroom: 6 ft 4 in	Ballast: 9000 lb
Displacement: 25000 lb	Windlass: Electric Windlass	Number of single berths: 2
Number of double berths: 2	Number of Cabins: 3	Number of Heads: 2

Engines

Number of Engines: 1	Primary Engines: Inboard	Drive Type: Direct Drive
Engine Make: Perkins	Engine Model: 4.154	Engine Year: 1985

Engine Hours: 5200
Rope Cutter: Yes

Total Power: 62 hp

Propeller Type: Folding

Tankage

Fuel Tanks Capacity: 70 gal

Fresh Water Tanks
Capacity: 135 gal

Holding Tanks #: 2

Holding Tank Capacity: 18
gal

Holding Tanks Material:
Plastic

Electronics

- Depthsounder
- Log-Speedometer
- Wind Speed and Direction - New 2009
- Plotter - New 2009
- Radio
- CD Player
- Cockpit Speakers
- Radar - New 2009
- Radar Detector
- Navigation Center
- Autopilot
- Compass
- GPS
- VHF - New 2011

Sails

- Fully Battened Mainsail - Mainsail managed with Lazy Jack system.
- Genoa - 130 furling headsail.
- Furling Genoa - Infinite reefing solent furling sail.

Rigging

- Steering Wheel - With back-up emergency tiller.
- Spinnaker Pole

Inside Equipment

- Electric Bilge Pump - Second electric bilge pump has a high water alarm.
- Microwave Oven
- Hot Water - New 2009
- Fresh Water Maker - With ZETA ROD high voltage treatment of incoming sea water.
- Oven
- Manual Bilge Pump
- Marine Head - Two heads (forward and aft).
- Refrigerator
- Deep Freezer
- Battery Charger - New 2009

Electrical Equipment

- Inverter - 2500 watts

Outside Equipment/Extras

- Cockpit Shower
- Davit(s) - Kato Marine
- Wind Generator - Kiss
- Solar Panel - 125 watts
- Cockpit Table
- Outboard Engine Brackets
- Radar Reflector
- Tender
- Cockpit Cushions
- Swimming Ladder

Covers

- Bimini Top - with full eisenglass enclosure
- Mainsail Cover
- Lazyjacks
- Spray Hood - Dodger
- Cockpit Cover - This full deck awning is in addition to the Bimini and runs the full length of the deck.
- Genoa Cover

Accommodations

The Endeavour 42' provides an *excellent live aboard layout*. Accommodations include a **large main salon** with a generous dining table. The two settees become two 3/4 size bunks. A forward **V-berth stateroom** provides privacy and generous sleeping quarters for two. A separate aft **master stateroom** includes a centerline queen size bed and lots of drawer/storage space. "**HIGHLAND LIGHT**" has **two heads with showers**, one forward and one in the aft stateroom. The large forward head can be accessed directly from the V-berth stateroom for privacy. In addition there is one **hot/cold outdoor shower**. There are numerous storage areas throughout. There is a **walk-through galley** on the port side and a **navigation station** on the starboard side.

Galley, Refrigeration & Watermaker

- The **freezer** is 16"x18"x22" (3.7 CF) and keeps ice cream frozen.
- The **refrigerator** section is 20"x16"x23" (4.3 CF) Twin holding plates mounted in the freezer compartment provide cooling. Spill-over system enhanced by a 12 volt fan.
- **Dixell LCD display / controls**. Temperature control is automatic and requires no operator action.
- The compressor is a **DanFoss** 12 volt air and/or water cooled unit.
- The **water-maker** is a **Spectra Model 380c / 14 GPH**. The system includes a **Zeta Rod pretreatment system** to prevent formation of biological growth and scale on the membrane. Control of the system is through the **MPC 3000 electronic controller**.
- The **Galley Maid Stove** is fueled by two 20# aluminum propane tanks stored in the aft port lazarette. This stove has three top burners and oven.
- A **microwave oven** is secured in the galley.

Electronics

Electronics and Navigation at the helm include:

- **Raymarine ST60 Speed, Depth and Wind**.
- **One Standard Horizon CP300 Chart Plotter** using C-Map NT chips. (New 2009)
- **SI-Tex MDS10, 4KW, 36nm color radar**. (New 2009)
- The chart plotter is also interfaced with a **West Marine AIS 1000 send/receive unit**. (New 2009)
- **Robertson Simrad AP300X controller** mounted on the helm controls the **Simrad Robertson hydraulic auto pilot**.
- **Standard Horizon remote microphone** is at the helm connected to a **Standard Horizon 25 Watt Marine VHF radio** located at the Navigation station. (NEW 2011)
- A spare hand held GPS is available for backup.
- **Hand-held Submersible VHF**.

Electronics at the Navigation Station include:

- One Icom IC-M802 Single Side Band Radio (SSB) with external speaker.
- One Pactor III modem to send and receive email and request and receive weather over the SSB .
- Standard Horizon VHF (mentioned above).
- Sony AM/FM/CD player includes two speakers in the salon and two speakers in the cockpit. The system is capable of plugging in an IPOD.

Electrical & Mechanical

- A revamped electrical supply and charging / regulating system includes 6 AGM Full River 6 volt/220 amp batteries (a total of 660 AH). **NEW 2010**
- There is an isolated AGM Full River heavy duty 12 volt engine starting battery. (New 2010)
- All batteries are housed in a secure custom battery mount.
- The battery charging and monitoring is controlled via a Link 2000 system, a Heart three stage regulator and a Battery Isolator Eliminator between house and starting batteries.
- Amps and AH from the solar panel and/or wind generator are also monitored.
- The Heart Incharge Alternator/Regulator is an automatic, multiple-cycle fully adjustable alternator regulator. The Isolator Eliminator trickle charges the starter battery from the house bank when the house bank is greater than 13.2 volts.
- The alternator is a Balmar 912. The output is rated at 100 Amps with temperature and battery sensors.
- Supplemental battery charging is via a 125 watt Kyocera solar panel and a Kiss wind generator. The solar panel and wind generator have their own regulator and are monitored via the Link 2000 system. .
- One Xantrex Freedom Marine Series Inverter Charger 2500 watt inverter is tied into all the 110V GFI outlets on the boat. The inverter includes a 100 amp battery charger while plugged into shore power.
- Manual Combiner Switch.

Deck & Cockpit

- The cockpit is uncluttered with all instruments installed in two Navpods.
- There is a fold-able cockpit teak table with two foldouts and a four glass holder.
- A Maxwell VW1200 Horizontal windless handles the 45 lb. Spade anchor with 100' of 3/8 BBB steel chain and 350' of 3/4" three strand nylon line. The second anchor is a 45 lb Delta with 60' of 3/8 BBB with 250' of 3/4" three strand nylon. line. A 20 lb. Danforth anchor is mounted on the aft starboard side.
- A saltwater wash-down is installed for the anchor system.
- A full Bimini and dodger covers the cockpit. Isinglass windows are installed in the Bimini top for sail trim viewing. Six Isinglass panels have been custom made to fully enclose the cockpit during inclement weather. The back of the Bimini can also be enclosed with two sun screen panels.
- There are sun screen panels for shade which can be mounted on the rear of the cockpit bimini.
- A full custom made awning covers the entire boat during extended stays in marinas, anchorages or while leaving the boat unattended.
- Gerry Cans (4 diesel 2 water and 3 gas).

Sails & Rigging

- 130% Genoa mounted on a Schaefer 3100 furler.
- 110% solent infinite reefing jib mounted on Schaefer 2800 furler. This working jib is mounted directly behind the genoa headsail.
- Mainsail is a fully battened main and installed on a Storm Track System for easy lifting.
- A Lazy Jack system is installed for the main sail control.
- The main sail has a full Sunbrella cover.
- A spinnaker / whisker pole is mounted on a track on the mast for down wind sailing.
- Adjustable running backstays have been installed.
- Spare internal main and jib halyards are installed.

Safety Equipment

- Life sling
- (2) SOS suspenders inflated with attached CO2 cartridge and automatic activated strobe attached.
- (1) Set of “Jack Lines” and two expandable clip on safety harnesses.
- All Coast Guard required equipment is on board and in good working order including flares, flare guns, horn and life preservers.

Underbody

- Three bladed Stainless Steel Martec Autostream feathering propeller - RH 20” diameter X 18 pitch with 1 1/4” bore.
- The bottom paint is Sea Hawk ablative Red – Three coats applied in July 2010.
- Two Dynaplates are installed.

Dinghy & Motor

- One Caribe L10 Inflatable Dinghy. Length 10’3” – Beam 5’5”. This is powered by a Tohatsu 18HP2 stroke outboard motor. A custom dinghy chap and the six gallon Tohatsu gasoline tank is included with the dinghy.
- One Kato Marine motor lift with Edson stern rail motor mount.
- One set of Kato Marine dinghy davits rated at 300 pounds per rail with a two fold purchase and three fold purchase pulley system.

Spares & Tools

A partial list of spare parts and special tools include:

Heart 3 Stage Regulator, Balmar 100 Amp Alternator, original fix bladed prop, engine water pump (fresh and salt water), hoses & gaskets & belts for Perkins 4.154 diesel, windless parts, rebuild kits for all pumps aboard. Manifold/refrigerant and hoses for topping off the refrigerator, spare pumps, head rebuild parts, winch handles, spare replacement bulbs, The list is too long to itemize completely.

Disclaimer

Owners personal items not listed here are not a part of the sale. The Company offers the details of this vessel in good faith but cannot guarantee or warrant the accuracy of this information nor warrant the condition of the vessel. A buyer should instruct his agents, or his surveyors, to investigate such details

as the buyer desires validated. This vessel is offered subject to prior sale, price change, or withdrawal without notice.



Down Wind with Pole



Where We All Want to Be!



At the Dock



Canvas



Wind Generator



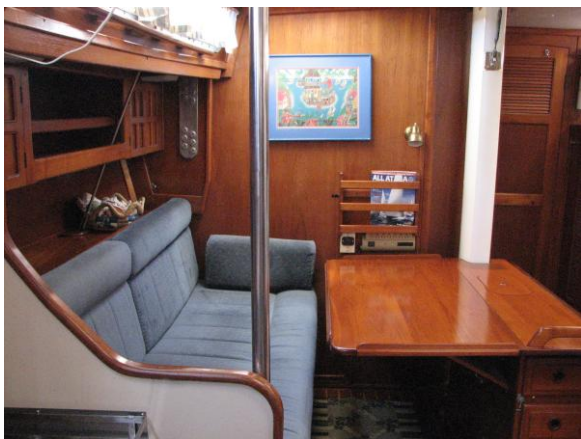
Solar



Cushions and Comfort



From the Helm



Salon Dining



Salon Settee



Settee with Extended Dining



Looking Forward from Galley



Galley looking Aft



Galley



Storage Outboard of Stove



Large Galley Sink



Master Berth



More Storage



Lots of Drawers and Lockers



Master Head



Separate Stall Shower



Nav Station



Electrical



Generous Storage Forward



Drawer Storage Under Berth



Guest Head to Port



Guest Head with Large Shower Stall