

# ENDEAVOR '39 COCKPIT SOLE

FWD E

ENGINE KILL

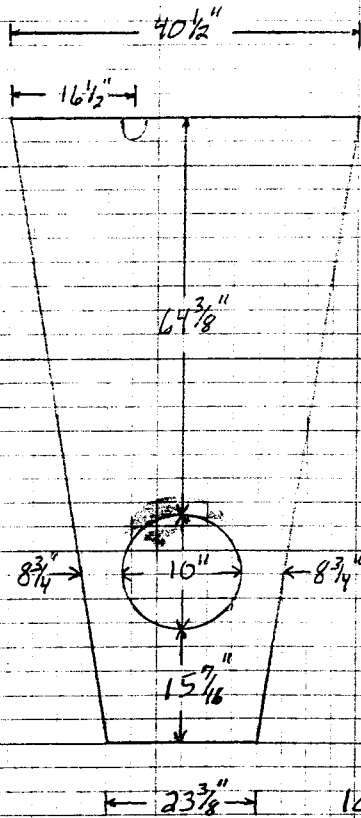
POSSIBLY LARGER HAND-HOLES IN FWD CORNERS.

WINCH HANDLE POCKET: RAISE 1/2" OR REMOVE.

VIEW 'A'

SCUPPER (WATER CHANNEL)  
1" WIDE, 1/4" DEEP,  
ENTIRE SOLE PERIMETER.

A



10" DIAM. ACCESS



48" (MAX LENGTH OF PIECES)

MAT'L'S

TEAK: NOTCHED - 24 EA.  
FLAT - 30 EA.

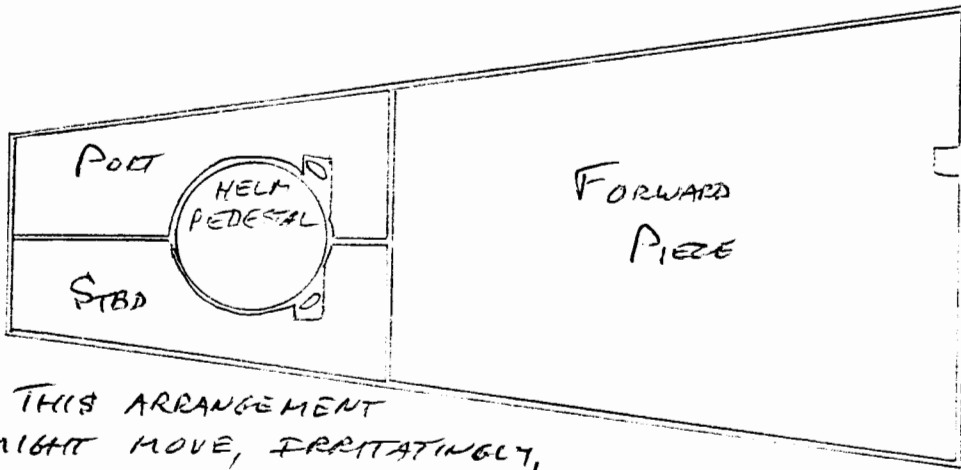
SCREWS: 300 EA.  
(#8 x 3/4")

TEAK PLUGS - 300  
(3/8")

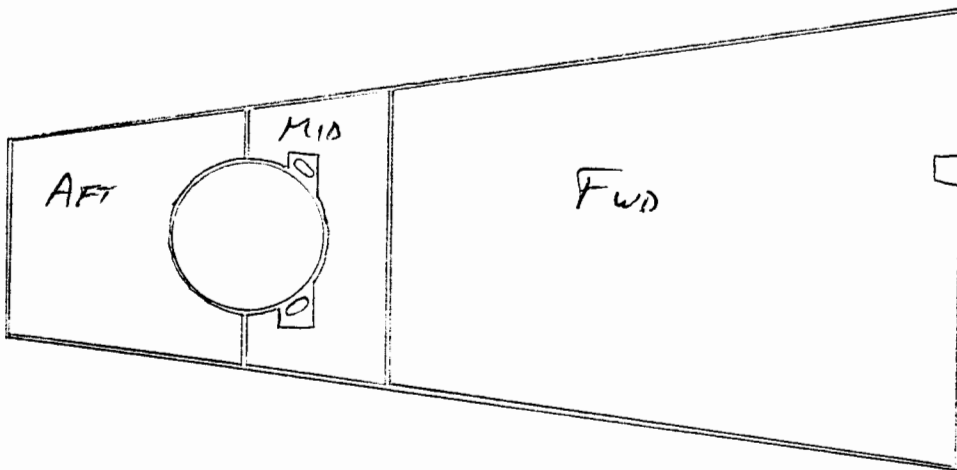
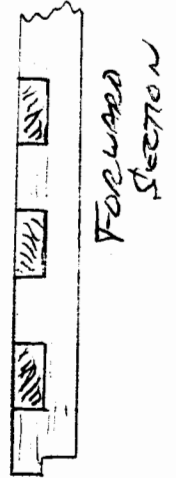
DRAINS

PROPOSED GRATING SECTIONS [NOT TO SCALE]

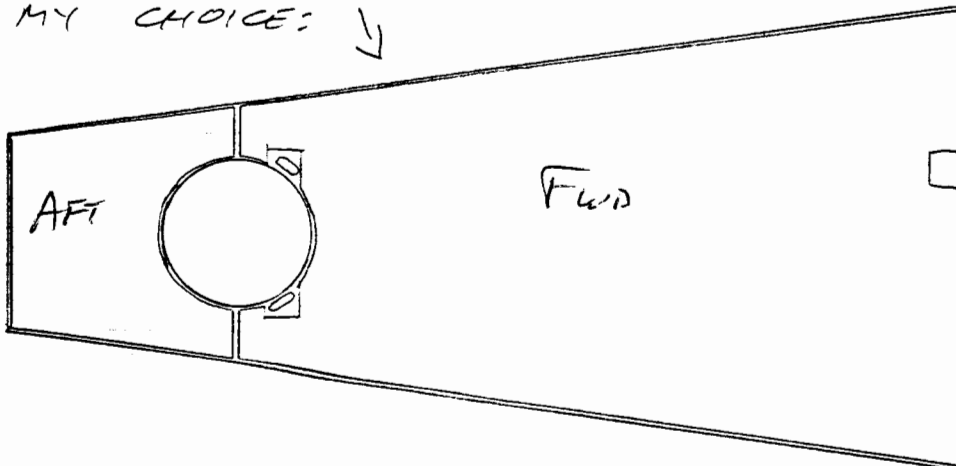
- ASSUMING LONGEST STOCK AVAILABLE = 48.



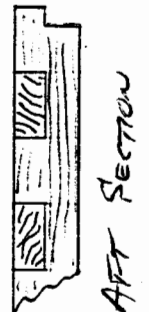
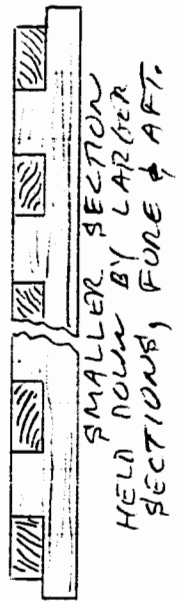
THIS ARRANGEMENT MIGHT MOVE, FRUITFULLY, UNDERFOOT.



\* IF YOU CAN SPECIAL-ORDER NOTCHED PIECES 57' LONG, THIS WOULD BE MY CHOICE: ↓



SIDE VIEW, GRATING JOIN DETAIL



\* OR: I COULD TRY SPLICING PIECES, FOR MORE LENGTH.

# MATERIALS

WEST MARINE :

| CAT #                     | ITEM                              | \$ EA | QTY | EXT. PRICE               |
|---------------------------|-----------------------------------|-------|-----|--------------------------|
| 314971                    | LARGE NOTCHED TEAK GRATING        | 17.95 | 24  | 430.80                   |
| 372276                    | LARGE FLAT " "                    | 8.49  | 30  | 254.70                   |
| 126377                    | 3/8" TEAK PLUGS PKG OF 20         | 1.79  | 15  | * 26.85                  |
| 494674                    | #8 x 3/4" WOOD SCREWS, PKG OF 100 | 14.45 | 3   | * 43.35                  |
| <del>in JATIBA WOOD</del> |                                   |       |     | 755.70                   |
| <del>JATIBA</del>         |                                   |       |     |                          |
| ① 19.                     |                                   |       |     | (APPROX) SHIPPING: 85.00 |
| ②                         |                                   |       |     | \$ 840.70                |

BOAT/US :

|                                       |                           |       |    |           |
|---------------------------------------|---------------------------|-------|----|-----------|
| 173174-10                             | LARGE NOTCHED TEAK        | 13.95 | 24 | * 334.80  |
| 173194-10                             | " FLAT "                  | 6.25  | 30 | * 187.50  |
| 139031-10                             | 3/8" TEAK PLUGS PKG OF 10 | 3.98  | 15 | * 59.70   |
| (FORGET IT!) (APPROX) SHIPPING: 40.00 |                           |       |    | 405.00    |
|                                       |                           |       |    | \$ 562.30 |

UNLESS YOUR FRIEND CAN BEAT BOAT/US..., HERE'S WHAT I RECOMMEND GETTING (IN GREEN ABOVE)....

\$447.-

BOAT/US TEAK & SHIPPING: \$ 562

WEST PLUGS, SCREWS, SHIPPING: \$ 81

\$ 643 FOR MAT'LS, LESS GLUE.

GLUE : EPOXY PURCHASED LOCALLY; I USED APPROX. \$30 WORTH TO DO THE ENDEAVOR (DON'S BOAT). YOURS MIGHT BE TWICE THAT.